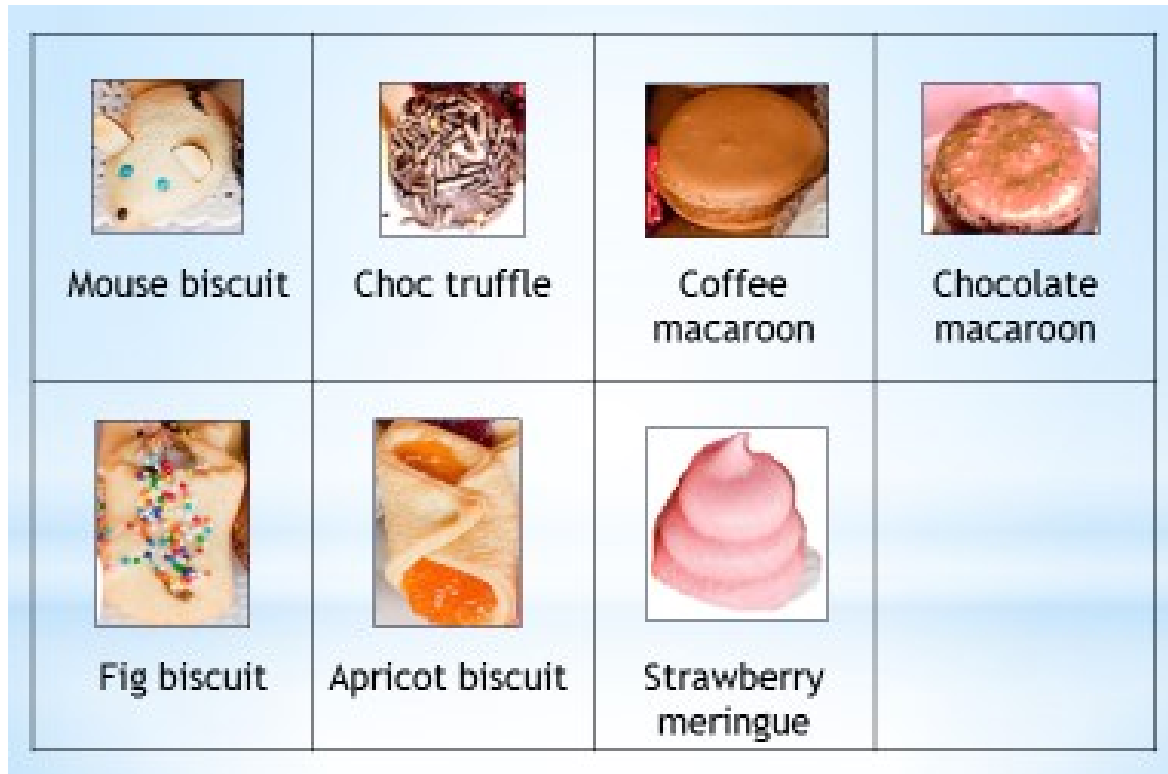
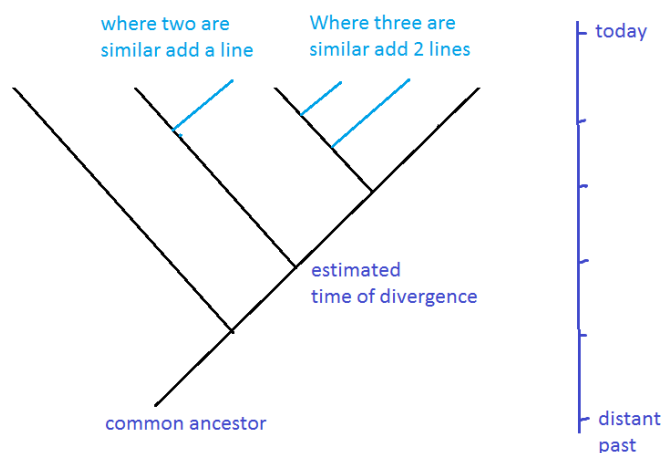


Activity 1- Build a cladogram

1. First cut out the following cookies – if you can't choose some read cookies from a box.

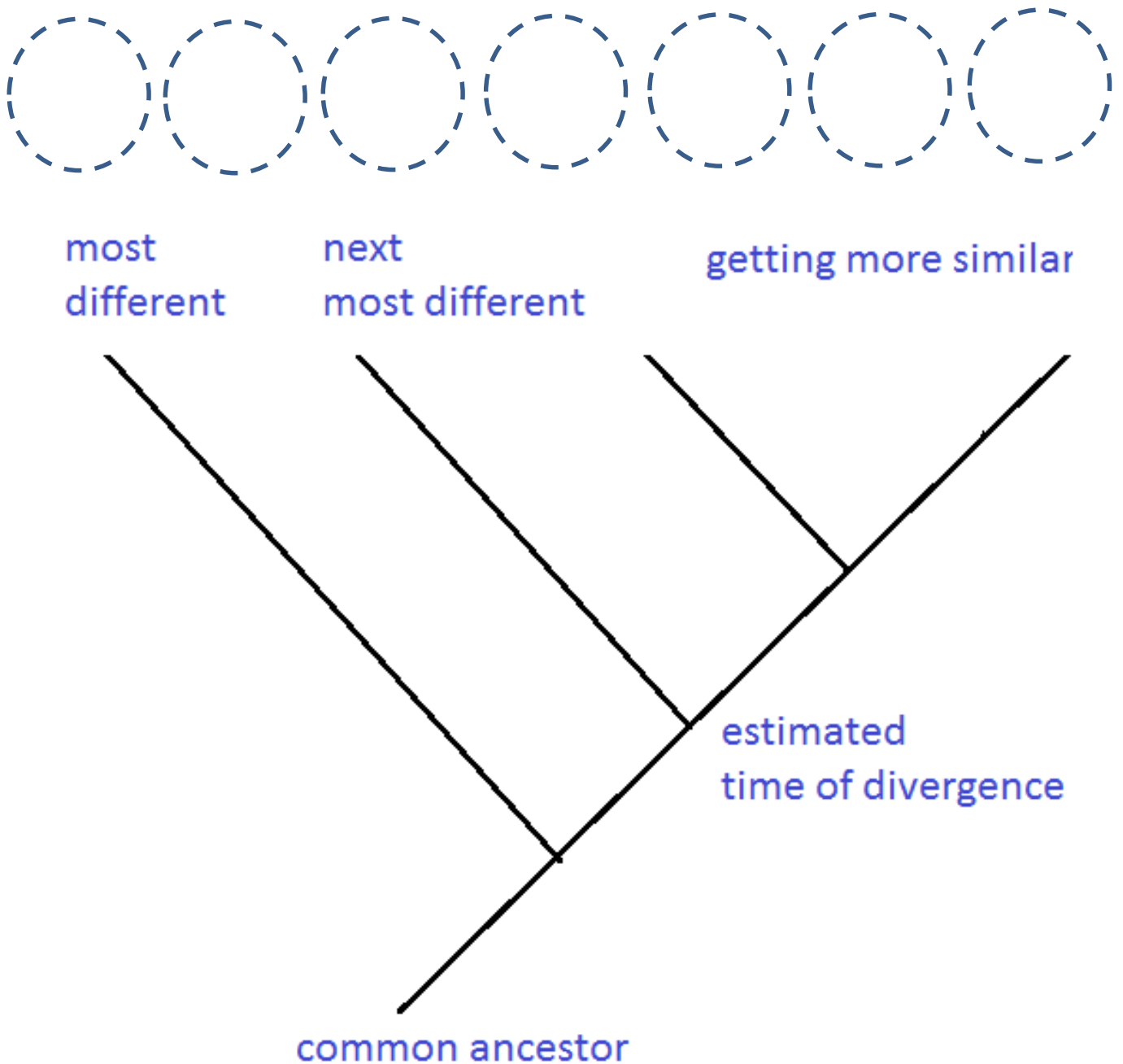


2. Just pick out the one cookie which is most different from the others
3. Put it at the top left of the blank cladogram diagram.
4. Then choose the next most different, and put it on the diagram.
5. Continue adding cookies to the diagram.
6. If two cookies are very similar put them together at the moment. (e.g. macaroons)
7. Add lines to the diagram to show the links for the cookies which are similar.
8. Then check that there isn't a simpler solution if you move some cookies from right to left etc.



Put your cookies on this diagram ...

Cookie cladogram



What will you do if a new species is discovered? How will you place it?